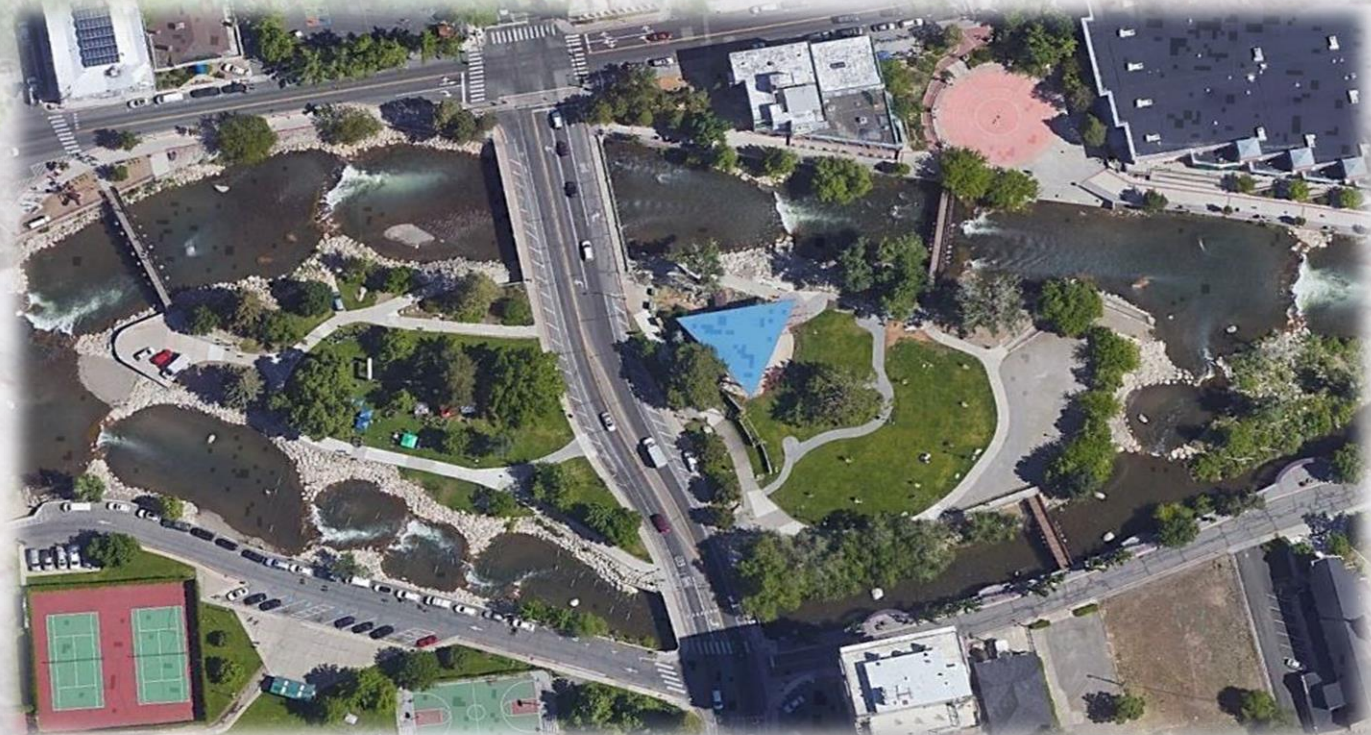


Design and Environmental Study For



ARLINGTON AVENUE BRIDGES REPLACEMENT


Design Review Committee Meeting #4 | July 19, 2022


Purpose of Today's DRC Meeting:

- ✓ Trees
 - ✓ Impacts to Existing
 - ✓ New Per City of Reno Standards
- ✓ Constructability Discussion
- ✓ 30% Submittal Questions/Discussion

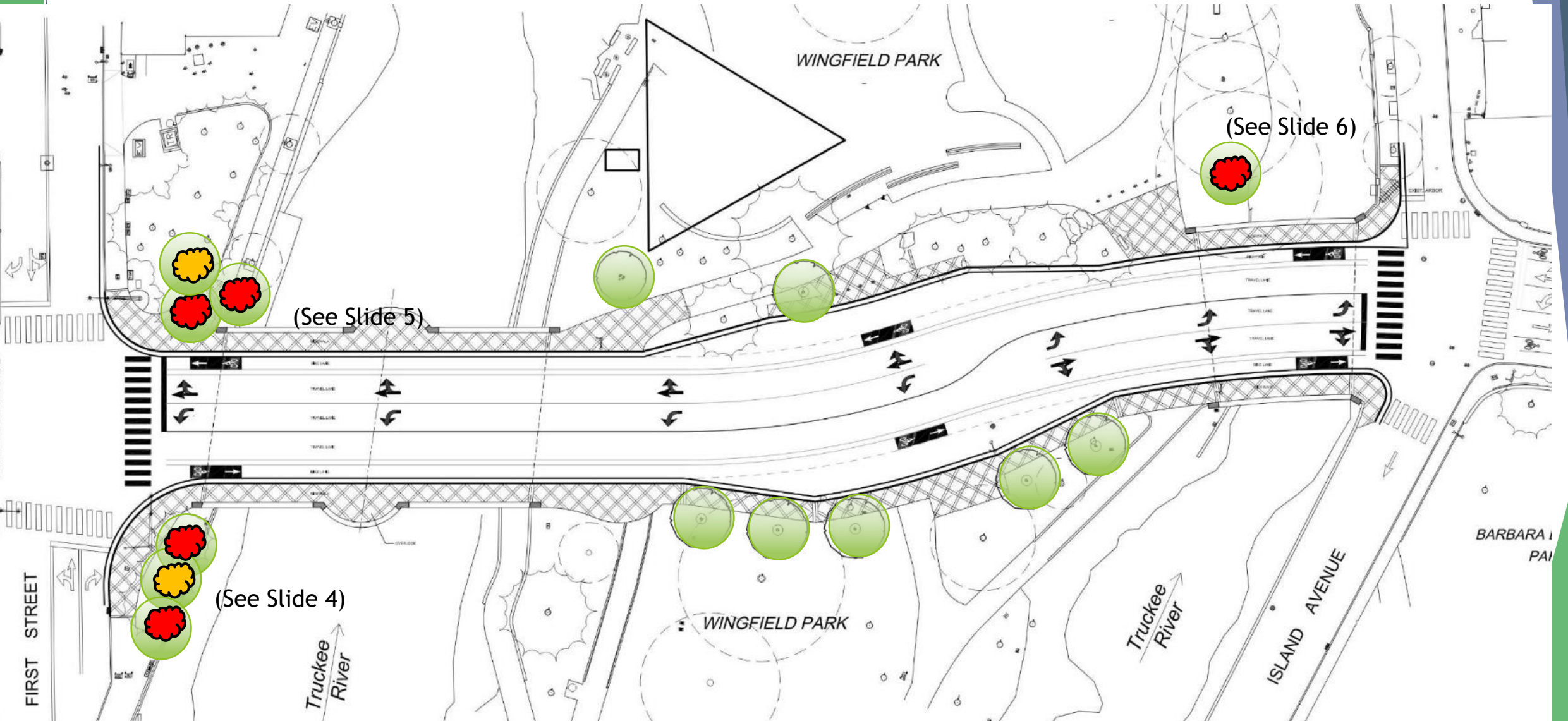


Trees

 Remove Tree

 TBD by Bridge Abutment & Floodwall Construction Limits

 Approximate New Tree



Trees – Northwest of North Bridge



Trees – Northeast of North Bridge



Trees – East side South Bridge

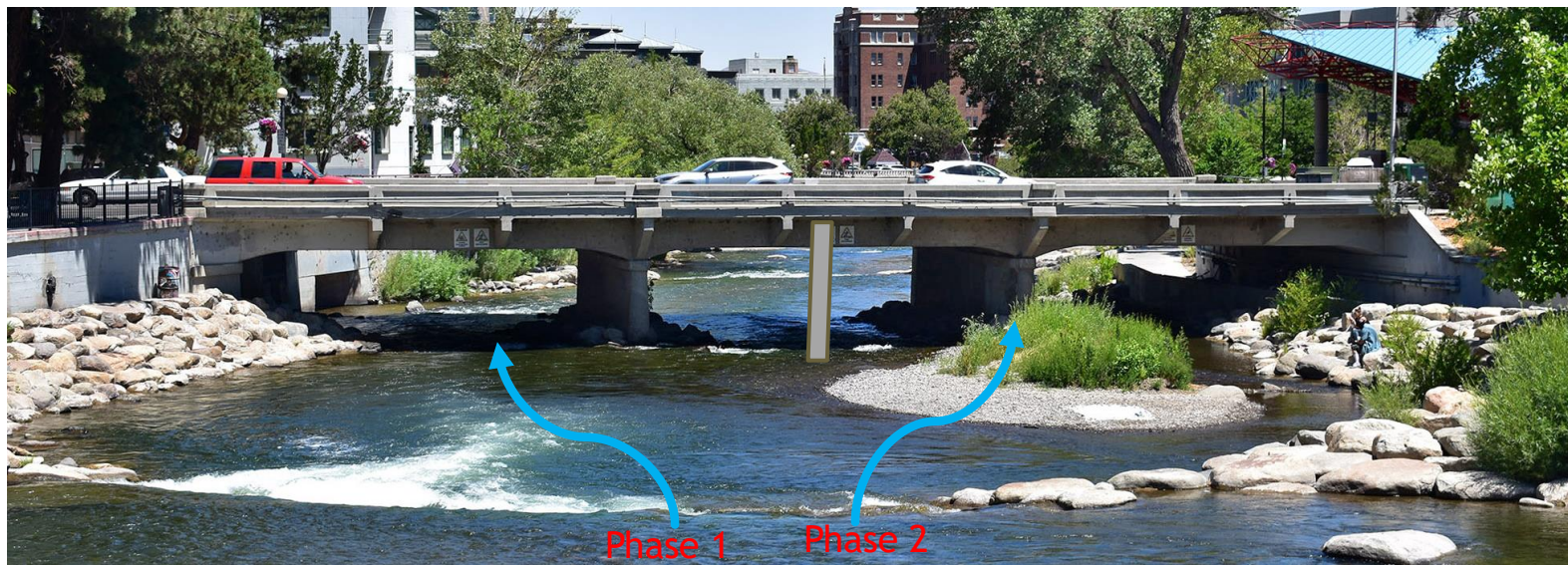


Constructability Discussion



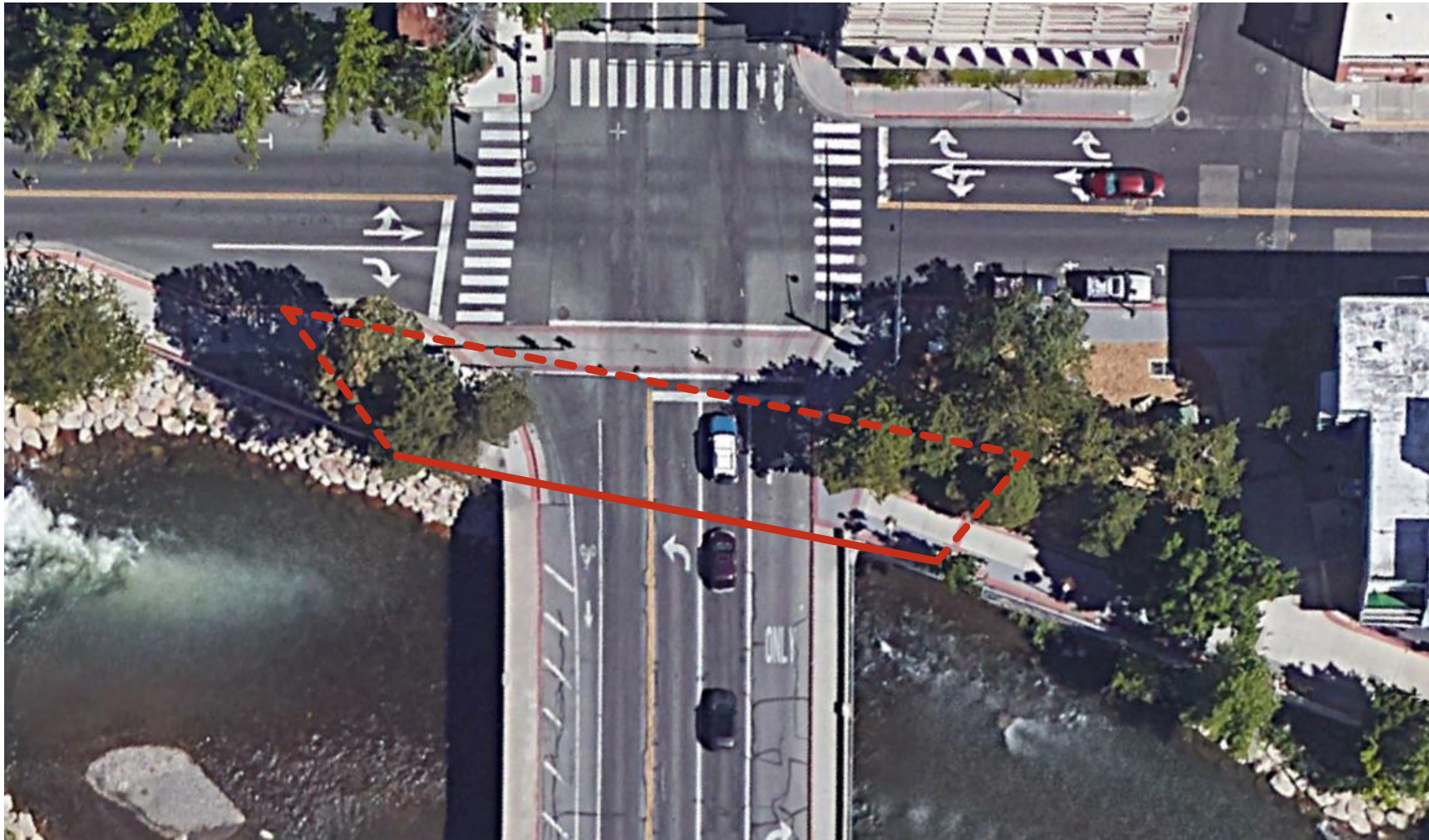
Constructability Discussion

- ✓ North Bridge
 - ✓ Assume flows prevent diversion to south fork
 - ✓ 2 Phases for local river diversion
 - ✓ Divert Water through existing northern opening: South Abutment, Path, Center Pier
 - ✓ Divert water through new southern opening: North Abutment
 - ✓ Abutments and Pier - Drilled Piles ~ 5' diameter



Constructability Discussion

- ✓ North Bridge
 - ✓ North end - Approximate Excavation Limits - 1.5:1 slope; 20-30'



Constructability Discussion

- ✓ North Bridge
 - ✓ Northwest and Northeast corners - Approximate Floodwall Limits

*Likely Excavation
limit behind
existing wall*



*Likely Excavation
limit behind
existing wall*



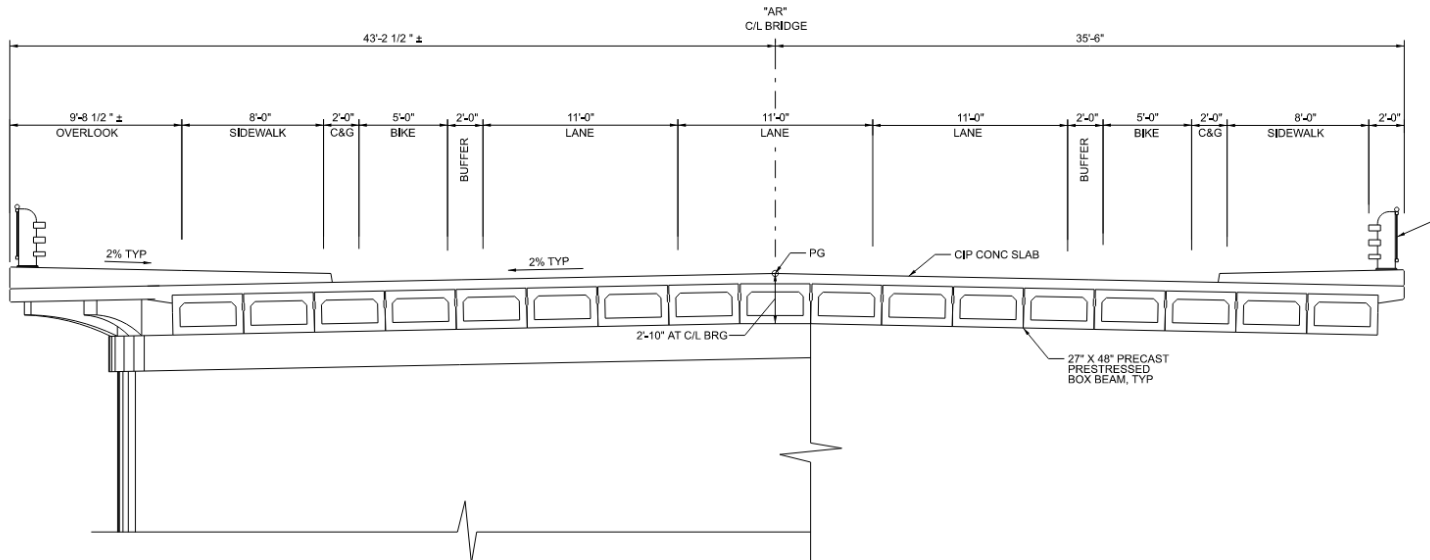
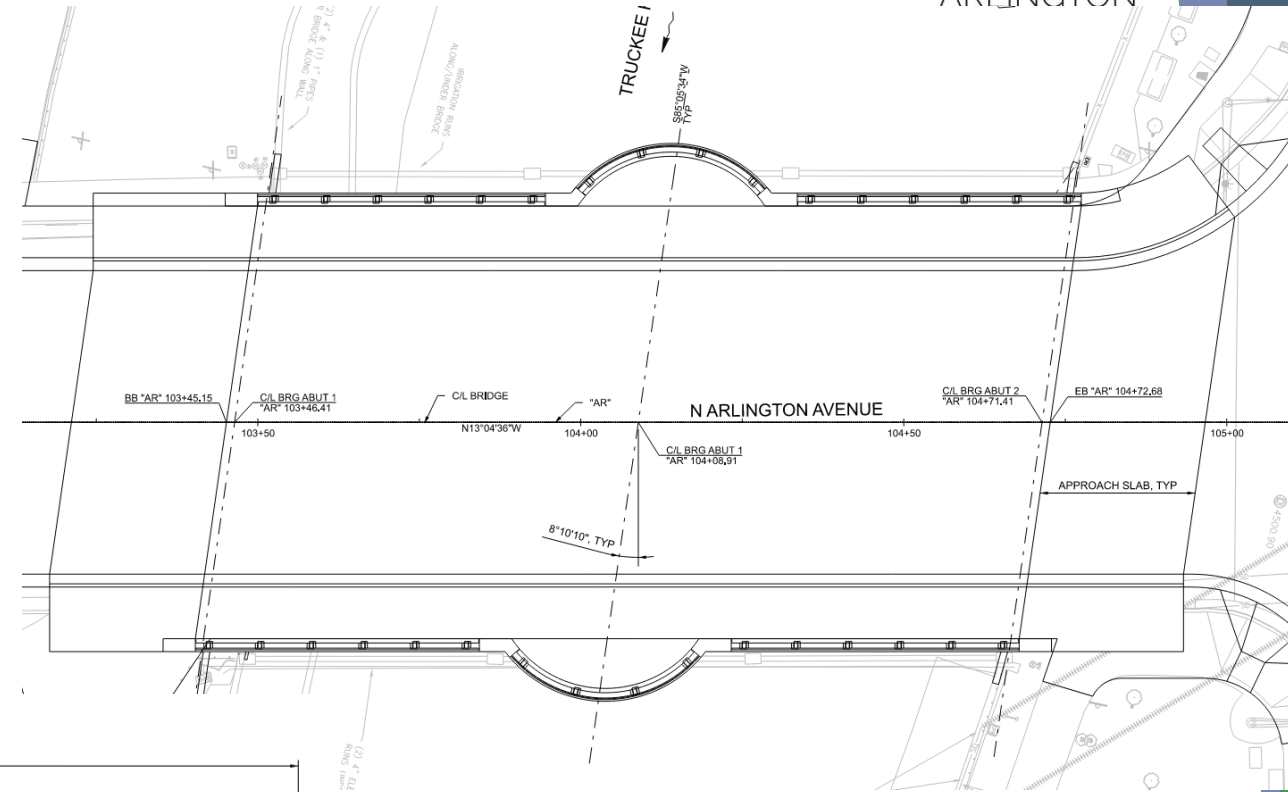
Constructability Discussion

- ✓ North Bridge
 - ✓ Possible Impacts to Traffic Signal Poles



Constructability Discussion

- ✓ North Bridge
 - ✓ Precast Prestressed Box Beams
 - ✓ Full Intersection Closure to Place Via Crane
 - ✓ Cast-In-Place Concrete Deck



Constructability Discussion

- ✓ South Bridge
 - ✓ Assume full diversion to north fork
 - ✓ Abutments - Drilled Piles ~ 5' diameter



Constructability Discussion

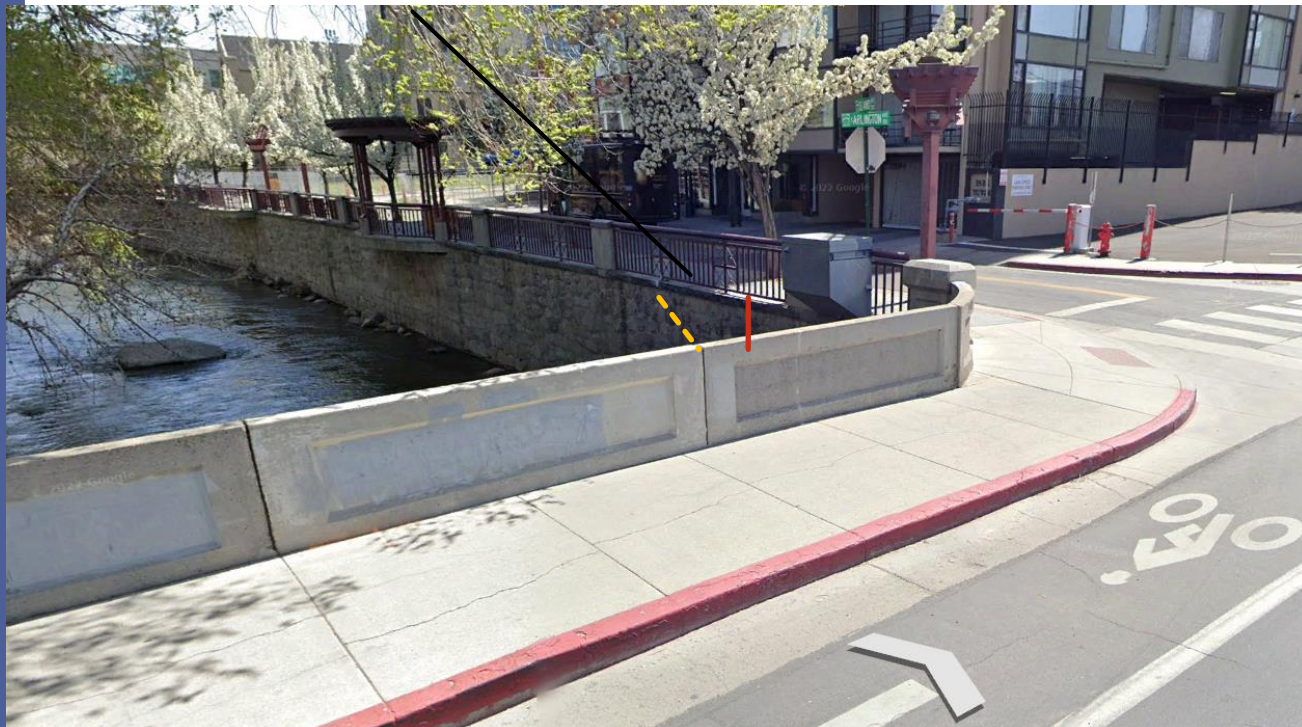
- ✓ South Bridge Construction River Diversion to North Fork



Constructability Discussion

- ✓ South Bridge
 - ✓ Southeast and Southwest corners - Approximate Floodwall Limits

*Likely Excavation
limit behind
existing wall
(without Shoring)*

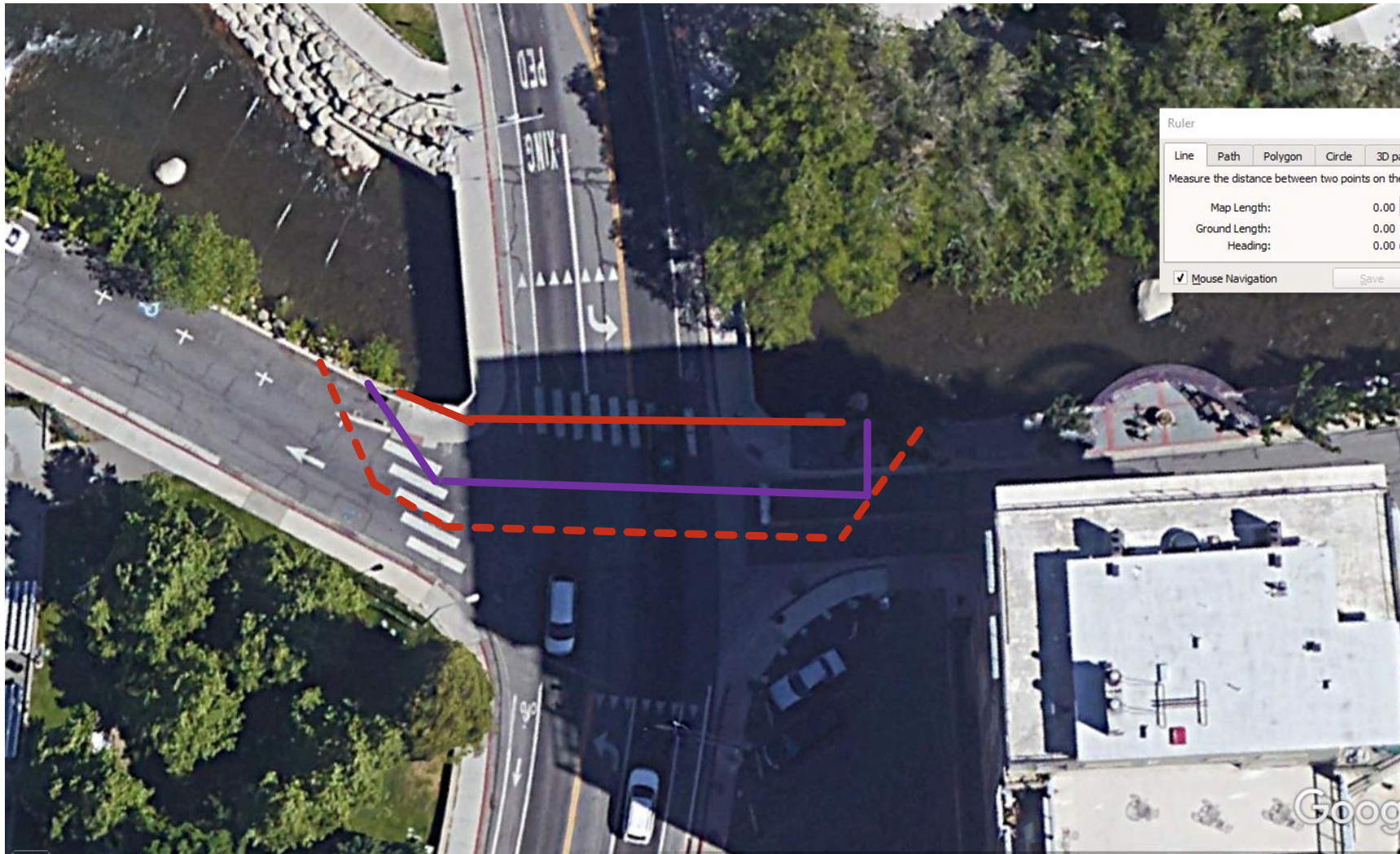


*Likely Excavation
limit behind
existing wall
(without Shoring)*

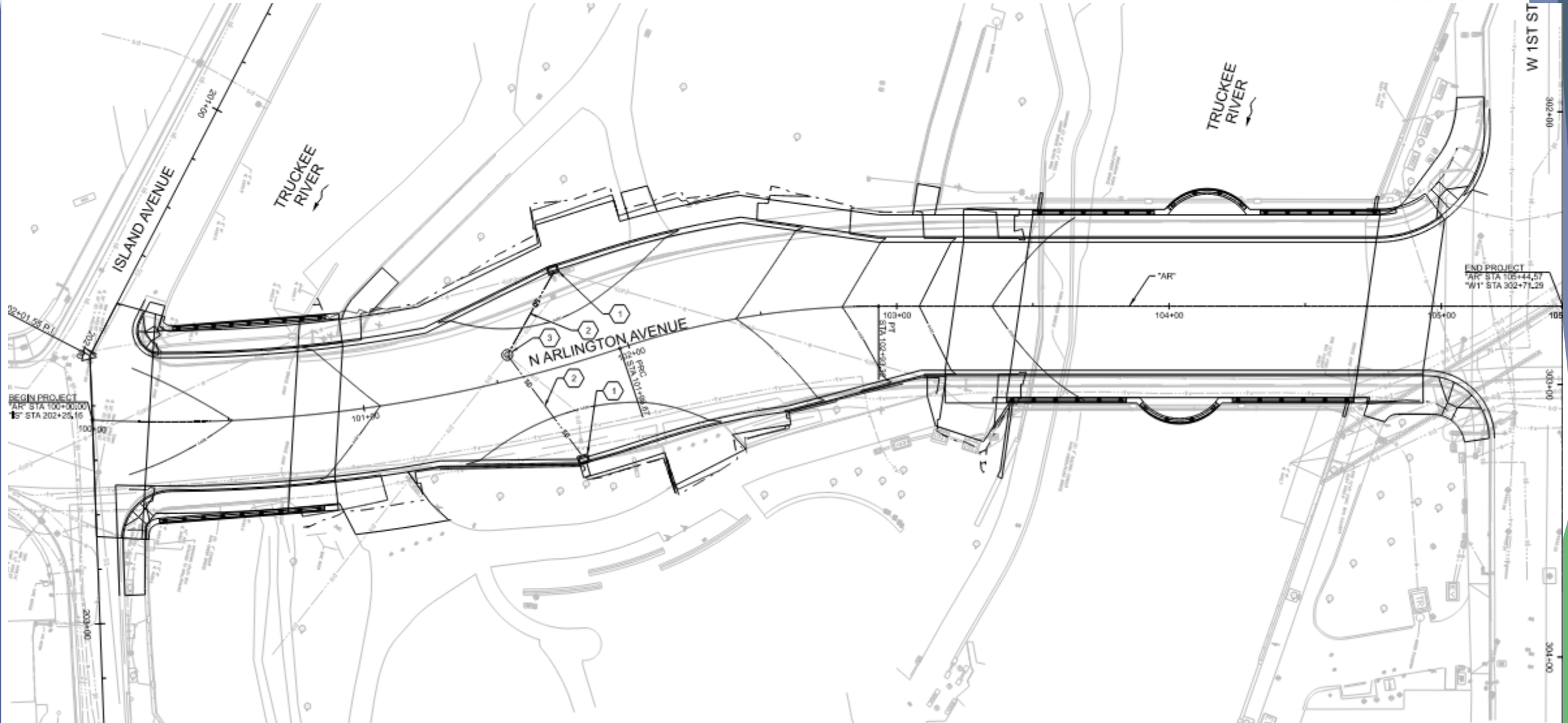


Constructability Discussion

- ✓ South Bridge
 - ✓ South end - Approximate Excavation Limits - 1.5:1 slope; 20-30' - **Shoring May be Required**
 - ✓ Ensure access to one-way Island Avenue / Eloise Drive

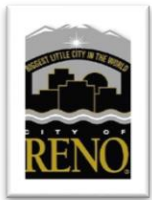


30% Submittal - Questions/Discussion



Thank You for Participating!

jtortelli@rtcwashoe.com



*Building A Better Community
Through Quality Transportation.*
rtcwashoe.com



PK Electrical, Inc.

